

Dual solid state relay

Features

- Two independent AC output solid state relays in one standard package.
- Enhanced noise immunity
- Inverse parallel SCR outputs.
- Choose from 4-15VDC or 17-32VDC input control.
- Zero voltage and random voltage turn-on versions.
- 2500V rms optical isolation.
- Quick connect style terminals.



Dual solid state relay ordering Information

S A D 24 20 *

JEENDA SSR model Number

A= AC solid State Relay

D= 4 -15VDC input ,**DE**= 17-32VDC input ,**Dual output 2 Form A (2 SPST-NO)**.

Load Voltage: 24 = 24-240VAC
48 = 48-480VAC

Max Current of load: 25A, 40A, 50A, 60A.

Turn-on Type: NIL=Zero-On, R=Random-on.

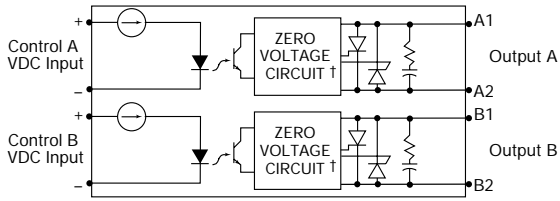
Input Specifications

Parameter	Units	Zero V or Random V Turn-on Units	
Control Voltage Range V_{IN}	VDC	4-15	17-32
Must Operate Voltage V_{IN} (OP) (Min.)	VDC	4	17
Must Release Voltage V_{IN} (REL) (Min.)	VDC	1	1
Input Current (Max.)	mA DC	34	24
Input Current (Min. for On-State)	mA DC	7.5	13
Input Resistance	Ohms	500	1500

Output Specifications

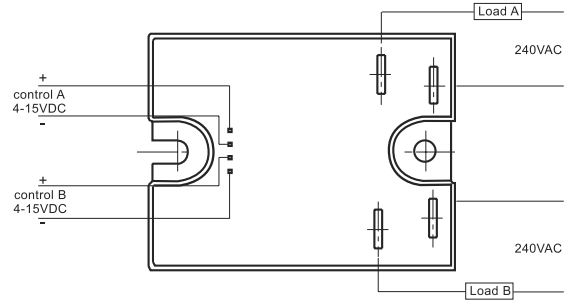
Parameter	Conditions	Units	25A Models	40A Models	50A Models
Load Voltage Range V_L	$f = 47 - 63$ Hz.	V rms	24-280		
Peak Voltage (Min.)	$t = 1$ Min.	V peak	550		
Load Current Range I_L *	Resistive	A rms	0.1-25	0.1-40	0.1-50
Single Cycle Surge Current (Max.)		A peak	500	780	972
One Second Surge Current (Max.)		A peak	150	234	292
Leakage Current (Off-State) (Max.)	$V_L = 280$ V rms	mA rms	0.1		
On-State Voltage Drop (Max.)	$I_L = \text{Max.}$	V peak	1.4	1.3	1.3
Static dv/dt (Off-State) (Min.)		V/ μ s	500		
Thermal Resistance, Junction to Baseplate ($R_{\theta J-B}$) (Max.)	Both Sections On	$^{\circ}$ C/W	0.6	0.6	0.6
Turn-On Time (Max.)	$f = 60$ Hz.	Ms	8.33 for Zero Voltage Turn-On Models <0.1 for Random Voltage Turn-On Models		
Turn-Off Time (Max.)	$f = 60$ Hz.	Ms	8.33		
I^2t Rating	$t = 8.3$ ms		1,041	2,435	
Load Power Factor Rating	$I_L = \text{Max.}$	A ² Sec.	0.5 - 1.0		

Operating Diagram



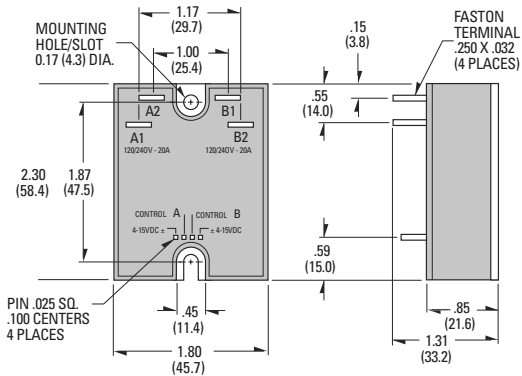
† Random Turn-on Units have a Random Turn-on circuit instead of Zero Voltage Circuit

Wiring Diagrams



Outline Dimensions

All dimensions are in inches (millimeters)



Electrical Characteristics (Thermal Derating Curves)

