

AC-DC Power Supplies With approval

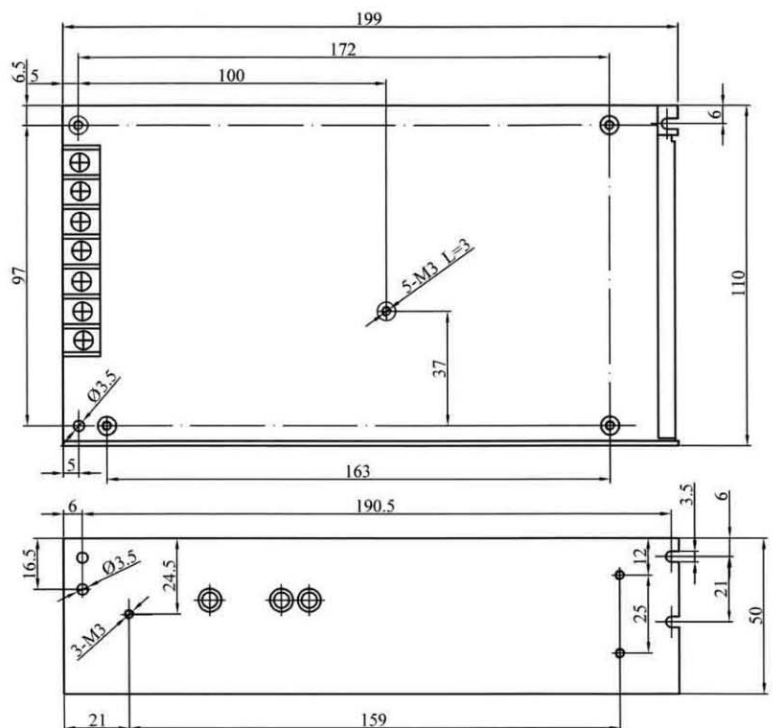
120W Quad Output Certified Power Supply

- AC Input Range Selectable By Switch
- EMI Meets EN55022(CISPR22) Class B
- Low Power Consumption
- Approvals: UL / CUL / TUV / CB / CE
- Protections: Over Load / Over Voltage / Short Circuit
- 100% Full Load High Temperature Burn-in Test
- 2 Years Warranty



Input Voltage Range	88~132VAC/ 176~264VAC Selectable By Switch
Input Frequency	47-63Hz
Inrush Current	Cold Start, 30A/ 115VAC, 50A/ 230VAC
Output Adjustment Range	CH1: -5%~+10% Rated Output Voltage
Line Regulation	≤0.5%
Output Over Load Protection	105%~135% Shut Off, AC recycle To Re-Start
Output Over Voltage Protection	CH1: 115%~135% Rated Output Voltage
Output Short Circuit Protection	Shut Off, AC recycle To Re-Start
Rise, Hold Up Time	50mS, 20mS at Full Load (Typical)
Hi-pot Isolation	I/P-O/P: 3KVAC, I/P-FG: 1.5KVAC, O/P-FG: 0.5KVAC
Operating Temperature Range	0°C to +50°C @100%, -10°C @80%, +60°C @60% Load
Storage Temperature Range	-40°C to +85°C, 0 to 95%RH (Non-Condensing)
Safety Standards	UL60950-1, TUV EN60950-1
EMC standards	EN55022 class B, EN61000-3-2,3 EN61000-4-2,3,4,5,6,8,11,ENV50204
Cooling Method	Free Air Cooling Convection
Weight	0.86Kgs/pcs

Product model	DC output	Load regul.	R&N	Efficiency	Max Output
HTQ-120F-B	5V, 2~12A	1%	75mV	77%	120W
	12V, 0.5~5A	6%	100mV		
	-5V, 0.2~1A	6%	75mV		
	-12V, 0.2~1A	6%	100mV		
HTQ-120F-C	5V, 2~12A	1%	75mV	76%	123W
	15V, 0.5~5A	6%	120mV		
	-5V, 0.2~1A	6%	75mV		
	-15V, 0.2~1A	+10%, -5%	120mV		
HTQ-120F-D	5V, 2~12A	1%	75mV	80%	124W
	12V, 0.2~5A	6%	100mV		
	24V, 0.2~2A	6%	150mV		
	-12V, 0.2~1A	6%	100mV		



notes:

1. All dimensions in mm.
2. Tolerance (except cable length): xx = ±0.04
xxx = ±0.010